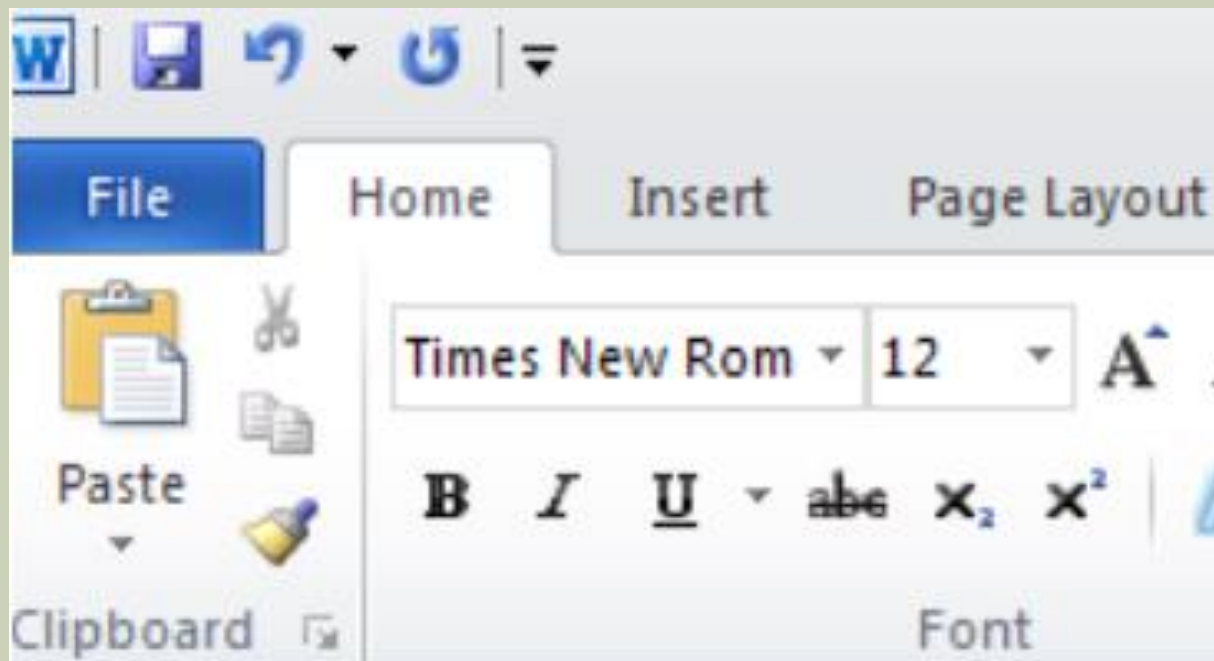


MLA REQUIRED FOR ALL ASSIGNMENTS

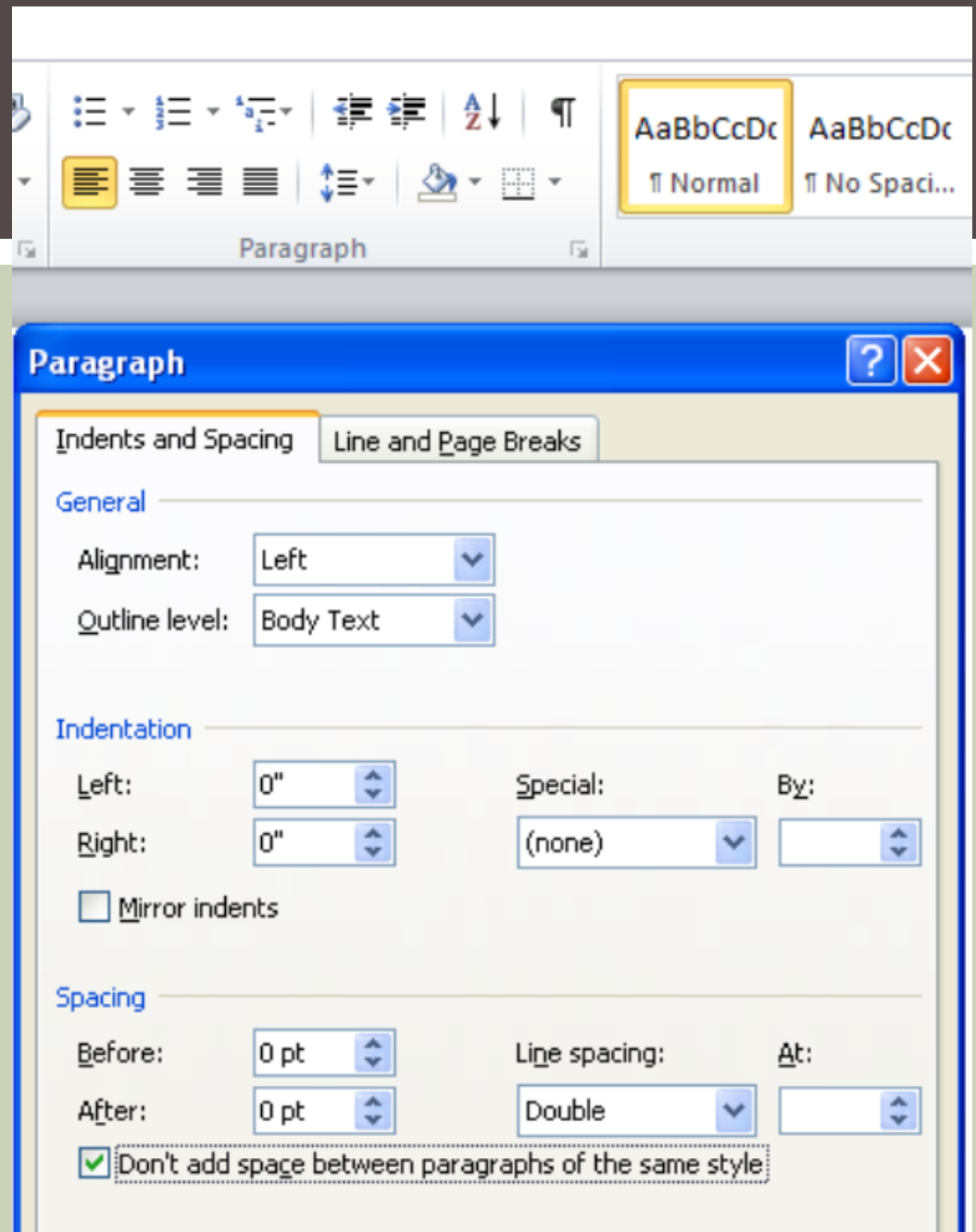
Seriously!

THE INFORMATION/DIRECTIONS

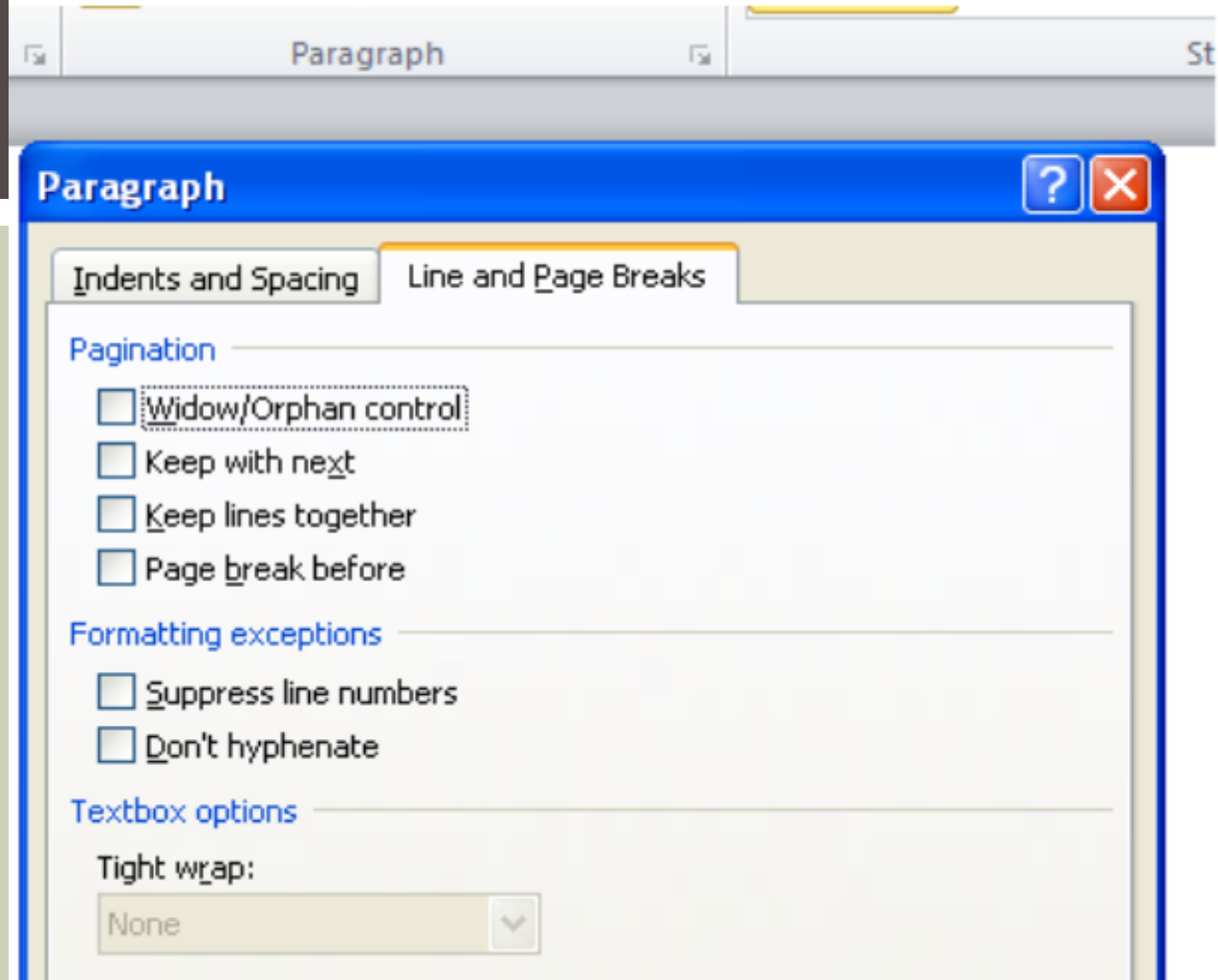
- Select TNR 12pt. Font



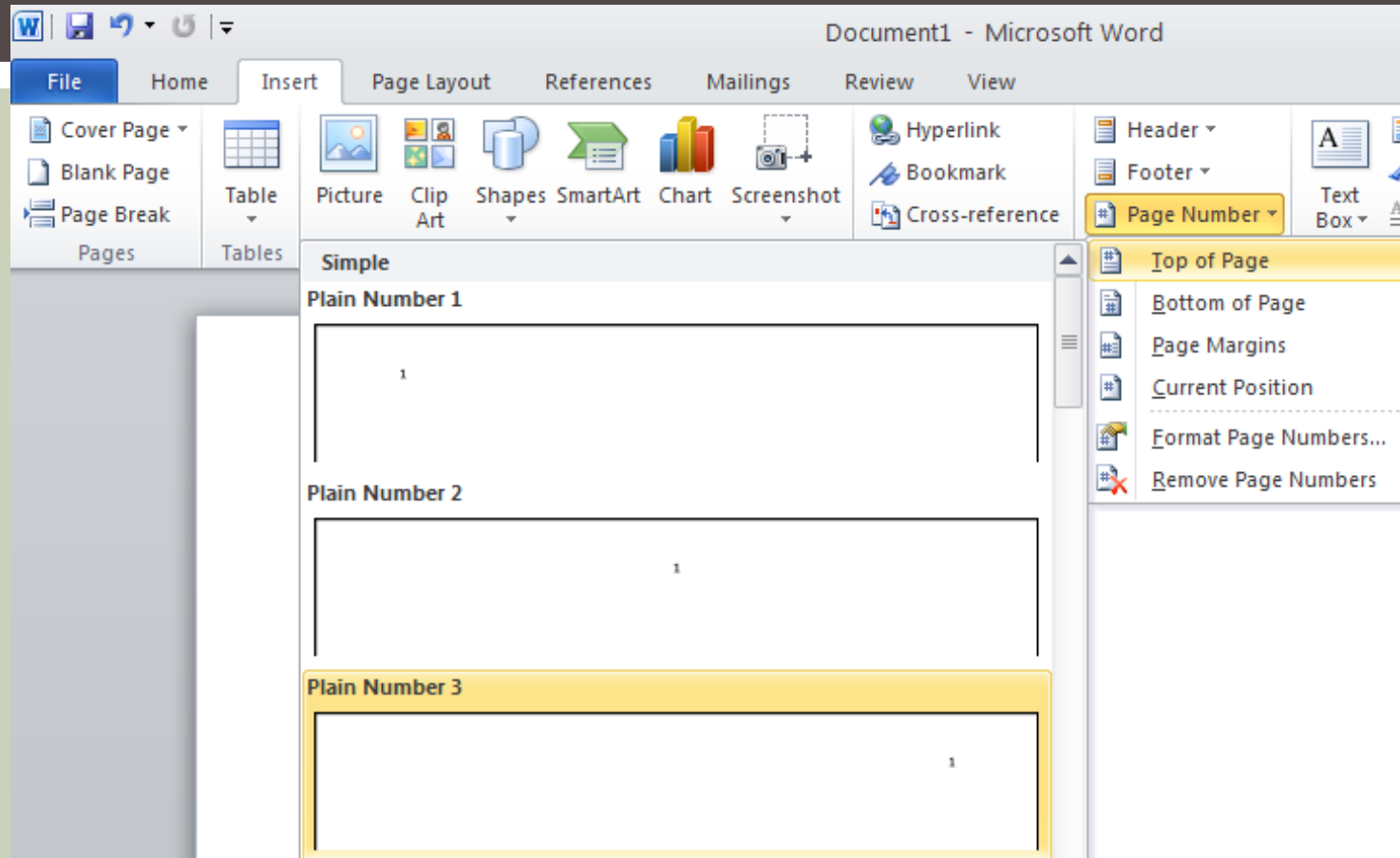
- Double Space and such
- Select the little arrow Next to “paragraph” to Open the dialogue box
- Select “Double”
- Make sure “before” and “after” are both set to “Opt.”
- Make sure to check the “don’t add space...” box



- Make sure to “uncheck” the “Widow/Orphan control”



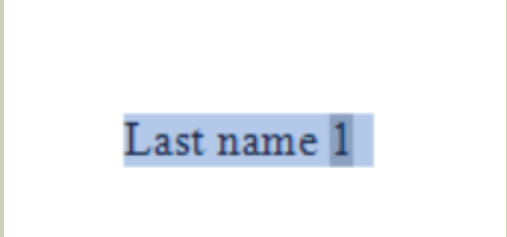
PAGINATION



- Select “insert” and “page number” and “top of page” and “Plain Number 3”

PAGINATION CONT'D

- Type your last name
- Change the font to TNR 12pt



Last name 1

- DO NOT INSERT A HEADER! IT MUST BE PAGE # for accurate MLA formatting.

HEADING

- Include the following information in your heading
- Note---the date is European and has NO COMMA
- AGAIN...DO NOT INSERT A HEADER...this is typed on the document

Last name 1

Student Name

Teacher Name

AP English Language and Composition

8 January 2013

TITLE

Last name 1

Student Name

Teacher Name

AP English Language and Composition

8 January 2013

Title centered

Start typing your wonderful essay...